



---

**Scheuring** AG Optimizes  
Businesses with Ext JS  
Based Resource Planning and  
Project Management Tools

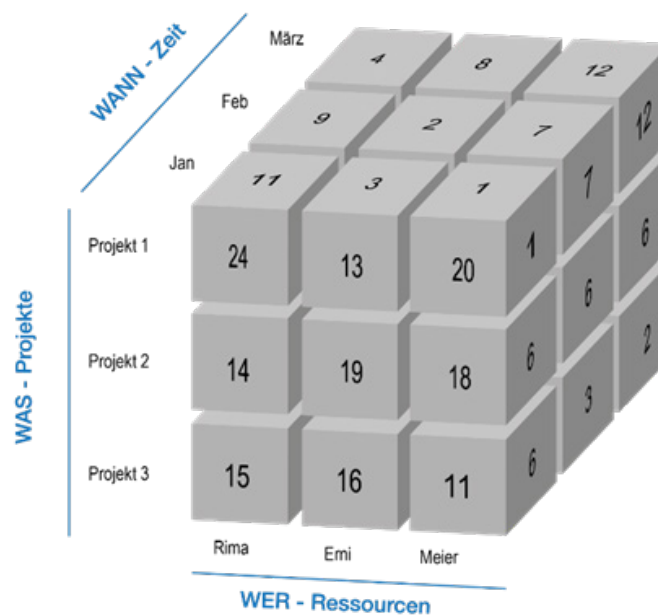
---

## Decades of Project Management Expertise

Project management is nothing new to Switzerland-based Scheuring AG, a consulting practice service and solutions software developer whose flagship tools, resSolution and hyperManager, help businesses succeed by streamlining and ultimately eliminating their project management issues. The company has been empowering its client organizations to ease resource planning, manage project portfolios, and facilitate core line-management tasks since 1995.

### resSolution

Scheuring has over 30 years of expertise dedicated to enabling its client companies to plan and execute successful projects. With resSolution, they give their customers the foresight to deploy human resources and optimize their product portfolios using the cube principle. This gives their operations maximum transparency and allows them to allocate employees by assigning them to projects and orders based on their skills, competencies, and availability.

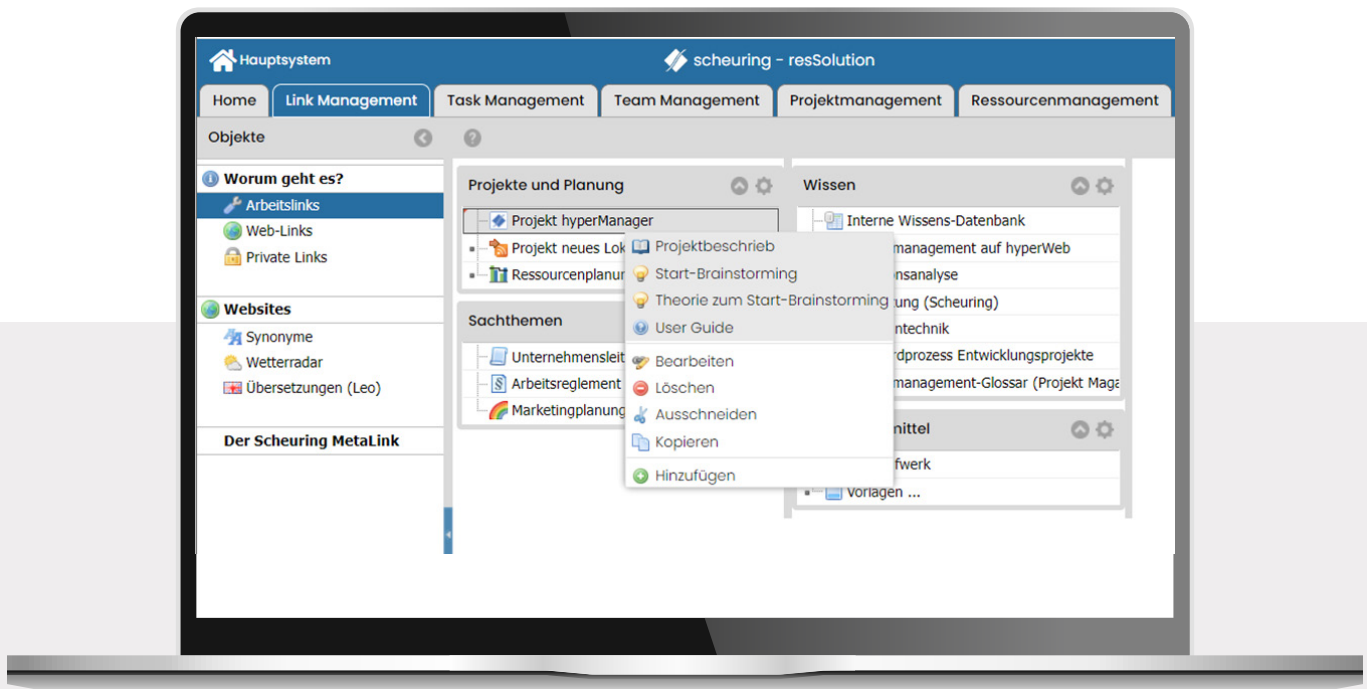


"The Sencha grid is the key element of resSolution and hyperManager. Ext JS and its other components have really helped us refine our business approach."

- Heinz Scheuring

## hyperManager

In 2007, Scheuring AG introduced hyperManager to help companies access their documents quickly and securely, effectively manage tasks within their teams, accurately document their meeting results, and efficiently administer and organize all addresses and contacts across their organization. Compared with conventional solutions, hyperManager offers improved information, knowledge, and task management across the project life cycle.

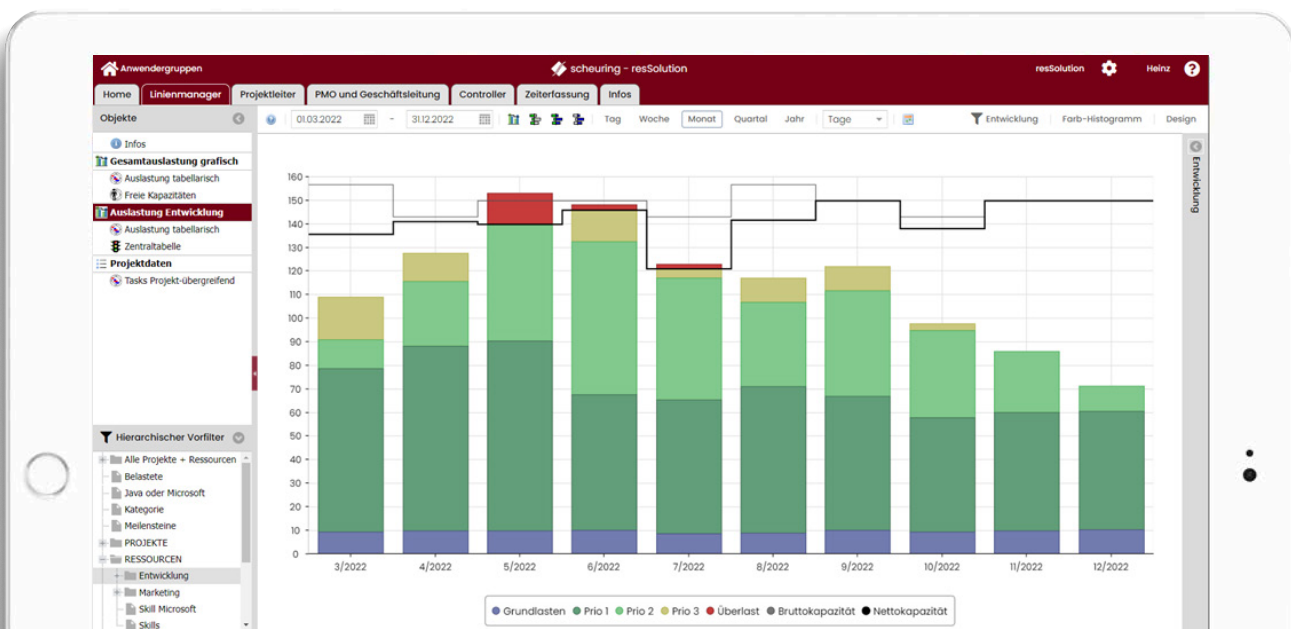


"A complete project management solution, resSolution includes all the functionality of our hyperManager system, allowing our customers to manage tasks on the project and line, control their processes, share knowledge, and much more"

-Scheuring AG

# Improving on Quality: Merging resSolution & hyperManager into a Single Web-Based Power Suite with Sencha Ext JS

Project management is nothing new to Switzerland-based Scheuring AG, a consulting practice service and solutions software developer whose flagship tools, resSolution and hyperManager, help businesses succeed by streamlining and ultimately eliminating their project management issues. The company has been empowering its client organizations to ease resource planning, manage project portfolios, and facilitate core line-management tasks since 1995.



"The Sencha grid is the key element of resSolution and hyperManager. Ext JS and its other components have really helped us refine our business approach."

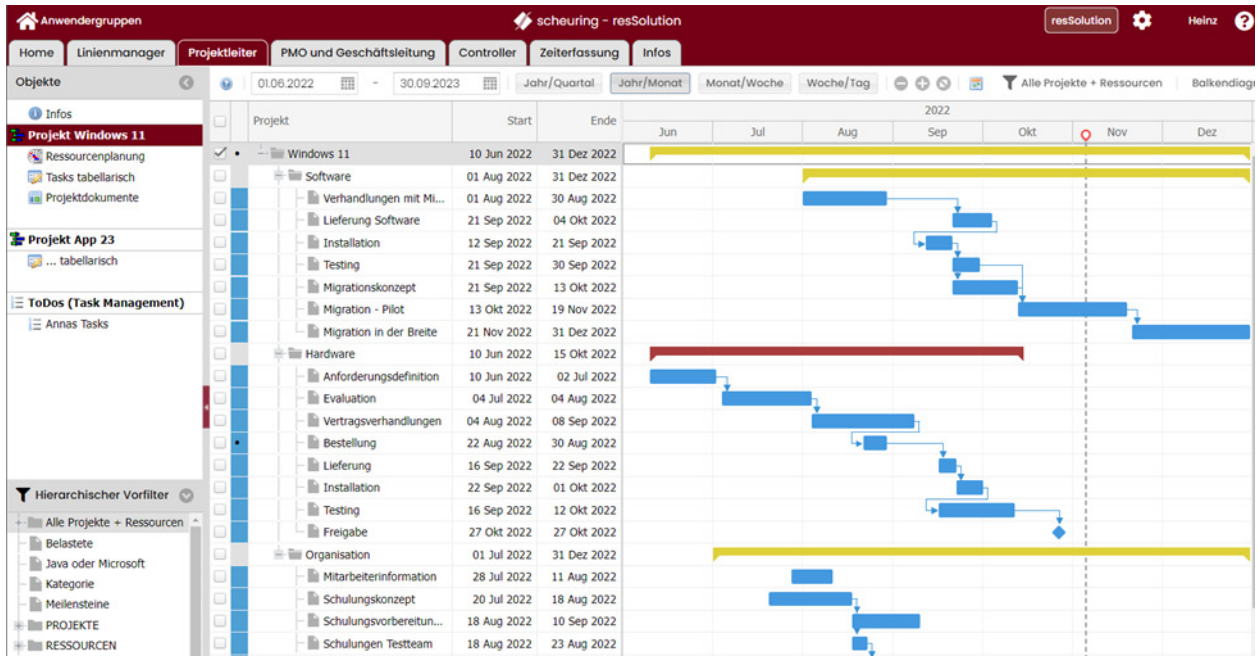
- Heinz Scheuring

One of the key resSolution resource planning functions built with Ext JS allows a company to track team member workloads, expose trends within the organization, and plan and compensate for schedule overloads.

With the help of the Ext JS update, resSolution tracks and displays each employee's workload and availability and flags their overload periods. Using the system, managers can easily spot problem areas and adjust schedules, lessening hours for overloaded employees, increasing the hours of underutilized resources, and manually transferring hours to free resources using the simple web-based tool.

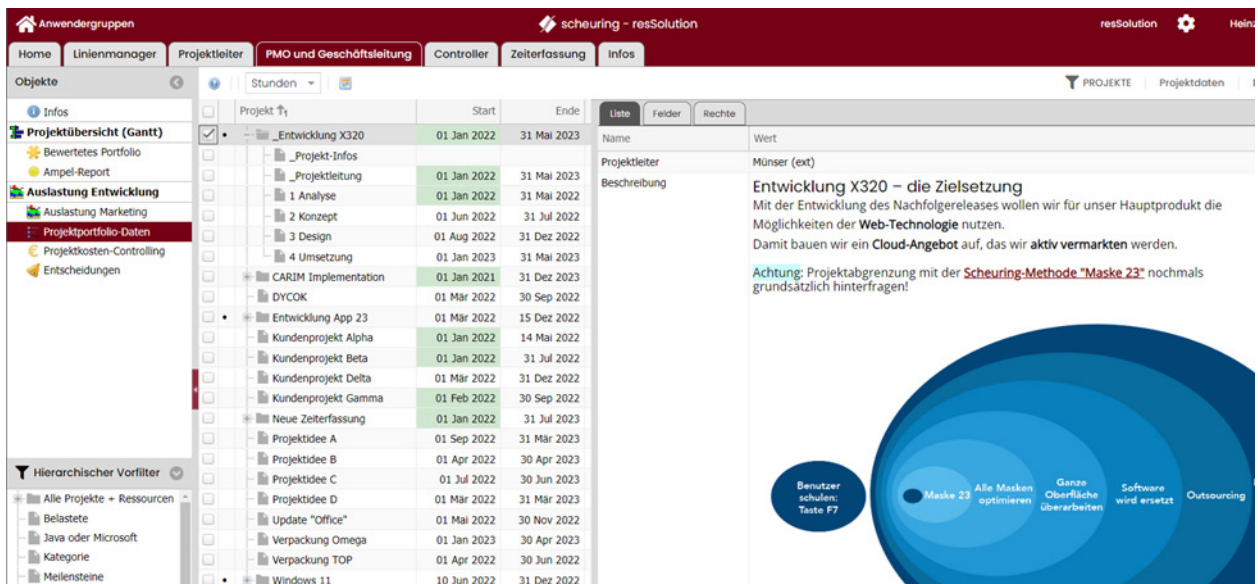
Resource Name	PlanRest	Total	Jan 2019	Feb 2019	Mar 2019	Apr 2019	May 2019	Jun 2019	Jul 2019	Aug 2019	Sep 2019	Oct 2019
<b>Total</b>	<b>1498.2</b>	<b>362.7</b>	<b>71.7</b>	<b>47.0</b>	<b>6.7</b>	<b>14.9</b>	<b>11.1</b>	<b>10.5</b>	<b>-6.3</b>	<b>13.3</b>	<b>18.1</b>	<b>35.3</b>
<b>Entwicklung</b>	1498.2	362.7	71.7	47.0	6.7	14.9	11.1	10.5	-6.3	13.3	18.1	35.3
Java	897.6	189.4	45.6	29.0	5.0	12.1	7.7	-0.2	-6.4	-1.4	3.7	18.1
Furrer	256.8	19.6	5.0	4.3	-2.7	-1.8	-1.7	0.4	-4.3	-0.6	2.0	2.9
Gary	224.4	61.2	16.1	10.1	6.7	2.6	3.2	1.2	1.2	-2.4	-1.8	3.7
Koller	202.4	60.1	11.6	6.8	7.9	9.5	4.3	-4.8	-3.6	1.4	2.1	4.4
Wenger	214.0	48.5	12.9	7.7	-6.9	1.8	1.9	2.9	0.3	0.2	1.5	7.1
WINDOWS	600.7	173.3	26.0	18.0	1.7	2.8	3.4	10.8	0.1	14.7	14.4	17.2
0_WinTeam												
Balmer	231.2	38.9	1.7	1.5	0.7	-0.3	4.9	5.6	-2.1	1.7	1.4	3.7
Schori	185.1	58.4	7.2	6.3	-0.1	1.9	-2.8	4.1	0.9	7.5	7.8	2.4
Wang	184.4	76.0	17.1	10.3	1.1	1.2	1.2	1.1	1.2	5.5	5.3	11.1

Powered by Ext JS - Resource Allocation and Workload by means of comprehensible tabular evaluations



With Sencha Ext JS, using additional components, resResolution also gained Gantt chart support, improving resource planning and scheduling as well as resource allocation.

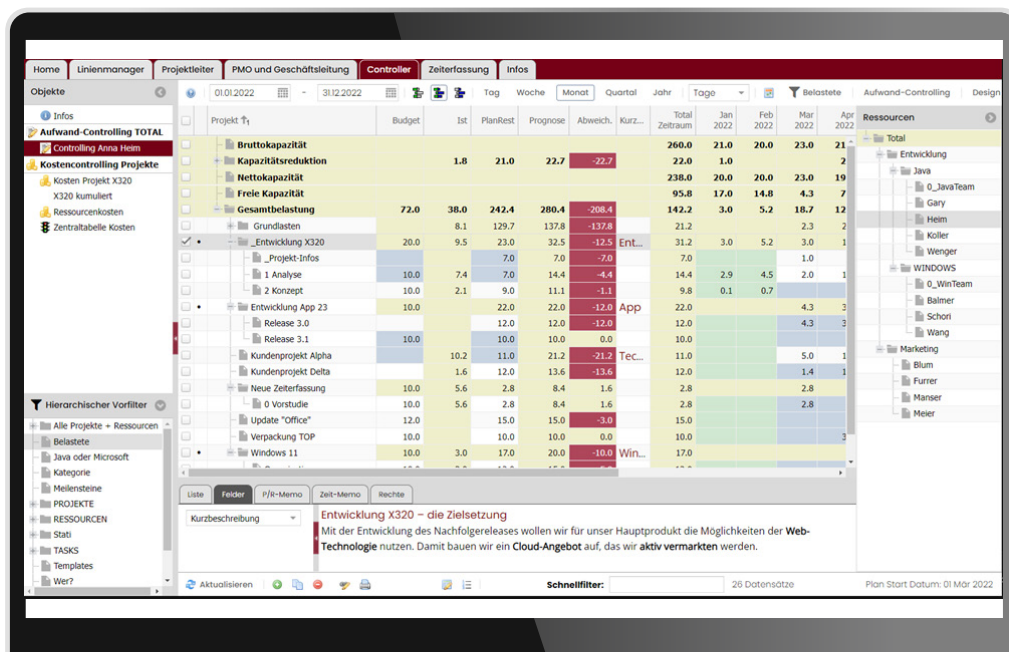
resResolution unites a company's resource portfolio and its project management efforts. It improves efficiency by providing management with timely, accurate information. With Sencha Ext JS, resResolution incorporates hierarchical levels. Using the system, a project manager can view and edit the deadlines of specific task levels within a hierarchy safely, without impacting or potentially destroying the higher, red-level, multiproject resource plan.



Multiwindow View using Ext JS

The Sencha Ext JS-powered resResolution tools offer unique features not found in competing tools:

- Two-Level Views — Allows managers to split their focus. High-level views enable “big picture” resource planning, while more detailed, granular views highlight specific tasks.
- Three-Sided Cube — Applies the cube principle to allow managers to view and edit on a time/ resources, and project basis.
- Feature Relevance — Cuts the noise. Curated and customizable function sets. Users see only the features and views they need. This keeps the system user-friendly and minimizes training costs while flattening the learning curve.



Navigating the resResolution Hierarchical Plan with Ext JS

The resResolution tool is highly scalable, handling large volumes of data. At the team member level, resources can easily number more than 500, while at the project level, dimension numbers in excess of 5,000 are possible.

## Reaping the Benefits of Ext JS

In addition to enterprise-class stability, Ext JS gave the Scheuring AG team the platform infrastructure they needed to implement the cube principle, allowing them to adopt a drag-and-drop approach where, previously, hierarchies would have been created manually. Likewise, Ext JS powers Scheuring's AG's charts and double column applications.







The performance benefits of Sencha Ext JS to Scheuring's resResolution and hyperManager suite were also significant. Where Scheuring originally used two database platforms — Derby & Microsoft SQL Server — the company has now switched to a single, more robust Microsoft SQL Server system for even greater performance gains.

By far the most significant gain is Scheuring's AG's ability to provide its clients with a robust, web-based architecture and transition from its desktop-bound fat client. Across the board, Sencha Ext JS has addressed Scheuring AG's pain points, empowering them to write better software and provide improved quality, efficiency, and feature-rich performance for their customers.

But the benefits were not one-sided — by providing valuable feedback to the Sencha Ext JS team, Scheuring AG has improved our development platform for future clients.

The Scheuring AG—Sencha Ext JS collaboration is, all said, a success in every sense. At Sencha, collaboration means teamwork — each partner giving the other a leg up to solve problems, improve their software, and continue to progress.

Scheuring Web-Based tool: <http://demo.hypermanager.ch/>

**TRY SENCHA EXT JS 30 DAYS FREE TRIAL NOW**

Sencha ist eine Tochterfirma von Idera, Inc.  
Um mehr zu erfahren, besuchen Sie [WWW.SENCHA.COM](http://WWW.SENCHA.COM)

